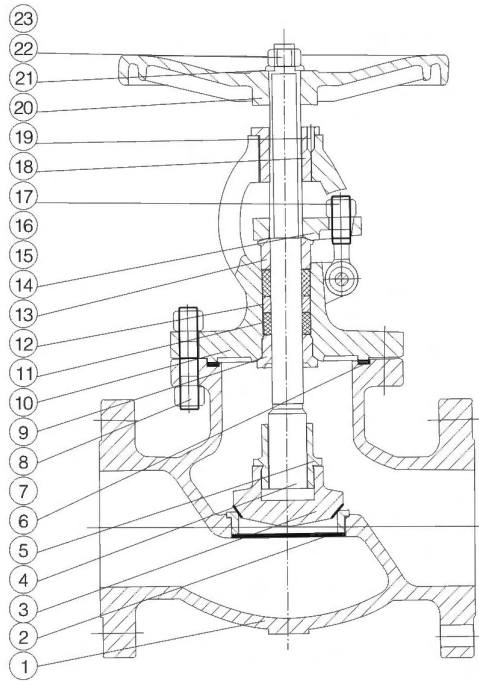


# Globe Valve

Gate Valve, Globe Valve, Plug Valve, Check Valve, Butterfly Valve ,  
Power Station Valve ,Oilfield Dedicated Valve Y-Strainer.



OS & Y, Rising Stem, Plug Type Disc Bolted  
Bonnet, Threaded Seat Ring

**STANDARDS COMPLIANCE:**

- Basic Design: BS1873
- Face to Face Dimension: ANSI B16.10
- End to End Dimension: ANSI B16.10
- Flanged Ends to ANSI B16.5
- B. W. Ends to ANSI B16.25
- Manufacturing to NACE MR-01-75 on request

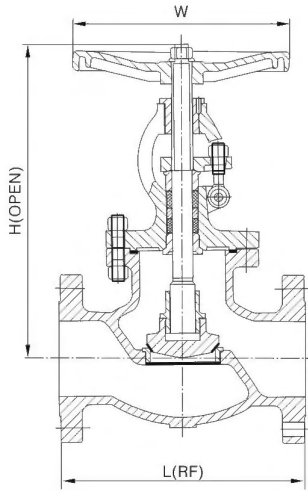
### Standard Material Specifications

| No | Part Name        | Carbon steel to ASTM                             |          | Alloy steel to ASTM |           |         | Stainless Steel to ASTM |            |            |            |
|----|------------------|--|----------|---------------------|-----------|---------|-------------------------|------------|------------|------------|
|    |                  | WCB  | LCB      | WC6                 | WC9       | C5      | CF8                     | CF8M       | CF3        | CF3M       |
| 1  | Body             | A216 WCB   | A352 LCB | A217 WC6            | A217 WC9  | A217 C5 | A351 CF8                | A351 CF8M  | A351 CF3   | A351 CF3M  |
| 2  | Seat Ring        | A105   | A350 LF2 | A182 F11            | A182 F22  | A182 F5 | A182 F304               | A182 F316  | A182 F304L | A182 F316L |
| 3  | Disc             | A105   | A250 LF2 | A182 F11            | A182 F22  | A182 F5 | A182 F304               | A182 F316  | A182 F304L | A182 F316L |
| 4  | Stem             | A182 F6  | A182 F6  | A182 F304           |           |         | A182 F304               | A182 F316  | A182 F304L | A182 F316L |
| 5  | Disc nut         | A182 F6  | A182 F6  | A182 F304           |           |         | A182 F304               | A182 F316  | A182 F304L | A182 F316L |
| 6  | Gasket           | SS Spiral Wound/graphite or SS Spiral Wound/PTFE |          |                     |           |         |                         |            |            |            |
| 7  | Bonnet nut       | A194 2H  | A194 4   | A194 7              |           |         | A194 8                  |            |            |            |
| 8  | Bonnet bolt      | A193 B7  | A320 L7  | A193 B16            |           |         | A193 B8                 |            |            |            |
| 9  | Backseat bushing | A182 B6  | A182 F6  | A182 F304           |           |         | A182 F304               | A182 F316  | A182 F304L | A182 F316L |
| 10 | Bonnet           | A216 WCB   | A352 LCB | A217 WC6            | A217 WC9  | A217 C5 | A351 CF8                | A351CF8M   | A351CF3    | A351 CF3M  |
| 11 | Lantern          | A182 F6  | A182 F6  | A182 F304           |           |         | A182 F304               | A182 F304L | A182 F304  | A182 F316L |
| 12 | Stem Packing     | Graphite or PTFE                                 |          |                     |           |         |                         |            |            |            |
| 13 | Gland            | A182 F6  |          |                     | A182 F304 |         | A182 F316               | A182 F316  | A182 F316L | A182 F316L |
| 14 | Gland Flange     | A216 WCB   |          |                     | A351 CF8  |         |                         |            |            |            |
| 15 | Gland Nut        | A194 2H  |          |                     | A194 8    |         |                         |            |            |            |
| 16 | Gland Eyebolt    | A194 B7  |          |                     | A193 B8   |         |                         |            |            |            |
| 17 | Pin              | Carbon steel or Stainless Steel                  |          |                     |           |         |                         |            |            |            |
| 18 | Stem Nut         | A439 D2 or B148-952A                             |          |                     |           |         |                         |            |            |            |
| 19 | Screw            | Carbon steel                                     |          |                     |           |         |                         |            |            |            |
| 20 | Hand Wheel       | Ductile Iron or carbon steel                     |          |                     |           |         |                         |            |            |            |
| 21 | Name Plate       | Stainless steel or Aluminum                      |          |                     |           |         |                         |            |            |            |
| 22 | Washer           | Carbon steel                                     |          |                     |           |         |                         |            |            |            |
| 23 | Nut              | Carbon steel or Stainless Steel                  |          |                     |           |         |                         |            |            |            |

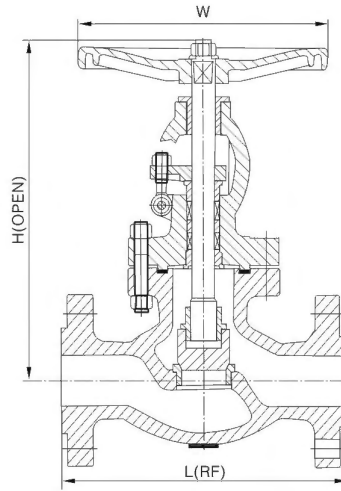
Other materials(Alloy 20, Alsi321, Alsi347, Monel, Hastelloy, etc.)are available on request.

# Globe Valve

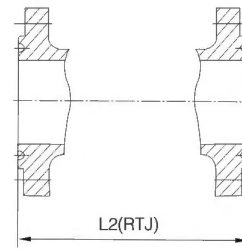
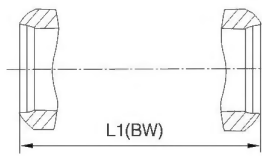
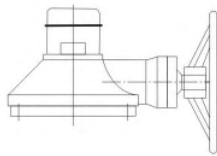
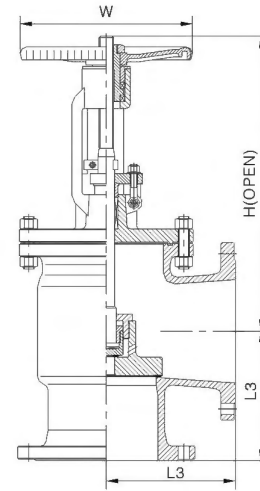
Gate Valve, Globe Valve, Plug Valve, Check Valve, Butterfly Valve, Power Station Valve, Oilfield Dedicated Valve Y-Strainer.



Class 150~300



Class 600~1500



## Test Pressure to API598

| Class | Body Material | Shell Test (Hydrostatic) | Seat Test (Hydrostatic) | Seat Test (Air) |
|-------|---------------|--------------------------|-------------------------|-----------------|
| 150   | WCB           | 450psi                   | 315psi                  | 80psi           |
|       | WC6           | 450psi                   | 319psi                  |                 |
|       | CF8M          | 425psi                   | 303psi                  |                 |
| 300   | WCB           | 1125psi                  | 814psi                  | 80psi           |
|       | WC6           | 1125psi                  | 825psi                  |                 |
|       | CF8M          | 1100psi                  | 792psi                  |                 |
| 600   | WCB           | 2225psi                  | 1628psi                 | 80psi           |
|       | WC6           | 2250psi                  | 1650psi                 |                 |
|       | CF8M          | 2175psi                  | 1548psi                 |                 |
| 900   | WCB           | 3350psi                  | 2442psi                 | 80psi           |
|       | WC6           | 3375psi                  | 2475psi                 |                 |
|       | CF8M          | 3250psi                  | 2376psi                 |                 |
| 1500  | WCB           | 5575psi                  | 4078psi                 | 80psi           |
|       | WC6           | 5625psi                  | 4125psi                 |                 |
|       | CF8M          | 5400psi                  | 3960psi                 |                 |

# Globe Valve

Gate Valve, Globe Valve, Plug Valve, Check Valve, Butterfly Valve , Power Station Valve , Oilfield Dedicated Valve Y-Strainer.

## Dimensions and Weights

| Class 150       |    |          |        |         |          |          |         |        |        |        |
|-----------------|----|----------|--------|---------|----------|----------|---------|--------|--------|--------|
| NPS             | in | 2        | 2-1/2  | 3       | 4        | 5        | 6       | 8      | 10     | 12     |
| DN              | mm | 50       | 65     | 80      | 100      | 125      | 150     | 200    | 250    | 300    |
| L-L1<br>(RF-BW) | in | 8        | 8-1/2  | 9-1/2   | 11-1/2   | 14       | 16      | 19-1/2 | 24-1/2 | 27-1/2 |
|                 | mm | 203      | 216    | 241     | 292      | 356      | 406     | 495    | 622    | 698    |
| L2<br>(RTJ)     | in | 8-1/2    | 9*     | 10      | 12       | 14-1/2   | 16-1/2  | 20     | 25     | 28     |
|                 | mm | 216      | 229    | 254     | 305      | 368      | 419     | 508    | 635    | 711    |
| L3              | mm | 102      | 108    | 121     | 146      | 178      | 203     | 248    | 311    | 349    |
| H<br>(OPEN)     | in | 14-11/16 | 15-3/8 | 16-9/16 | 20-1/4   | 21-3/16  | 22-5/15 | 24-5/8 | 28     | 39     |
|                 | mm | 373      | 390    | 421     | 515      | 538      | 567     | 626    | 712    | 990    |
| W               | in | 7-7/8    | 9-7/8  | 9-7/8   | 11-13/16 | 11-13/16 | 13-3/4  | 15-3/4 | 17-3/4 | 24     |
|                 | mm | 200      | 250    | 250     | 300      | 300      | 350     | 400    | 450    | 610    |
| WT              | RF | 22       | 29     | 42      | 64       | 77       | 105     | 154    | 288    | 507    |
| (KG)            | BW | 19       | 25     | 34      | 49       | 65       | 82      | 131    | 249    | 430    |

| Class 300       |    |          |        |         |         |        |         |         |        |         |
|-----------------|----|----------|--------|---------|---------|--------|---------|---------|--------|---------|
| NPS             | in | 2        | 2-1/2  | 3       | 4       | 5      | 6       | 8       | 10     | 12      |
| DN              | mm | 50       | 65     | 80      | 100     | 125    | 150     | 200     | 250    | 300     |
| L-L1<br>(RF-BW) | in | 10-1/2   | 11-1/2 | 12-1/2  | 14      | 15-3/4 | 17-1/2  | 22      | 24-1/2 | 28      |
|                 | mm | 267      | 292    | 318     | 356     | 400    | 444     | 559     | 622    | 711     |
| L2<br>(RTJ)     | in | 11-1/8   | 12-1/8 | 13-1/8  | 14-5/8  | 16-3/8 | 18-1/8  | 22-5/8  | 25-1/8 | 28-5/8  |
|                 | mm | 283      | 308    | 333     | 371     | 416    | 460     | 575     | 638    | 727     |
| L3              | mm | 133      | 146    | 159     | 178     | 200    | 222     | 279     | 311    | 356     |
| H<br>(OPEN)     | in | 15-11/16 | 17-1/8 | 18-3/16 | 22-1/16 | 24-3/8 | 27-5/16 | 38-5/8  | 44-1/2 | 41-5/16 |
|                 | mm | 398      | 436    | 462     | 560     | 620    | 694     | 982     | 1130   | 1049    |
| W               | in | 7-7/8    | 9-7/8  | 9-7/8   | 13-3/4  | 15-3/4 | 17-3/4  | 22-1/16 | 34     | 18-1/8  |
|                 | mm | 200      | 250    | 250     | 350     | 400    | 450     | 560     | 864    | 460*    |
| WT              | RF | 31       | 43     | 57      | 86      | 130    | 168     | 280     | 385    | 724     |
| (KG)            | BW | 26       | 28     | 44      | 68      | 110    | 138     | 228     | 329    | 618     |

| Class 600       |    |        |          |        |        |        |          |        |        |  |
|-----------------|----|--------|----------|--------|--------|--------|----------|--------|--------|--|
| NPS             | in | 2      | 2-1/2    | 3      | 4      | 6      | 8        | 10     | 12     |  |
| DN              | mm | 50     | 65       | 80     | 100    | 150    | 200      | 250    | 300    |  |
| L-L1<br>(RF-BW) | in | 11-1/2 | 13       | 14     | 17     | 22     | 26       | 31     | 33     |  |
|                 | mm | 292    | 330      | 356    | 432    | 559    | 660      | 787    | 838    |  |
| L2<br>(RTJ)     | in | 11-5/8 | 13-1/8   | 14-1/8 | 17-1/8 | 22-1/8 | 26-1/8   | 31-1/8 | 33-1/8 |  |
|                 | mm | 295    | 333      | 359    | 435    | 562    | 664      | 791    | 840    |  |
| H<br>(OPEN)     | in | 16-3/4 | 19-3/4   | 20-1/2 | 24-3/8 | 34-7/8 | 36-11/16 | 41     | 50-3/8 |  |
|                 | mm | 425    | 502      | 521    | 620    | 886    | 932      | 1040   | 1280   |  |
| W               | in | 9-7/8  | 11-13/16 | 13-3/4 | 17-3/4 | 28-3/8 | 18-1/8   | 24     | 30     |  |
|                 | mm | 250    | 300      | 350    | 450    | 720    | 460*     | 610*   | 760*   |  |
| WT              | RF | 39     | 58       | 73     | 120    | 327    | 482      | 700    | 900    |  |
| (KG)            | BW | 33     | 48       | 61     | 95     | 261    | 385      | 588    | 795    |  |

\*Manual gear operator is recommended

## Globe Valve

Gate Valve, Globe Valve, Plug Valve, Check Valve, Butterfly Valve ,  
Power Station Valve , Oilfield Dedicated Valve Y-Strainer.

### Dimensions and Weights

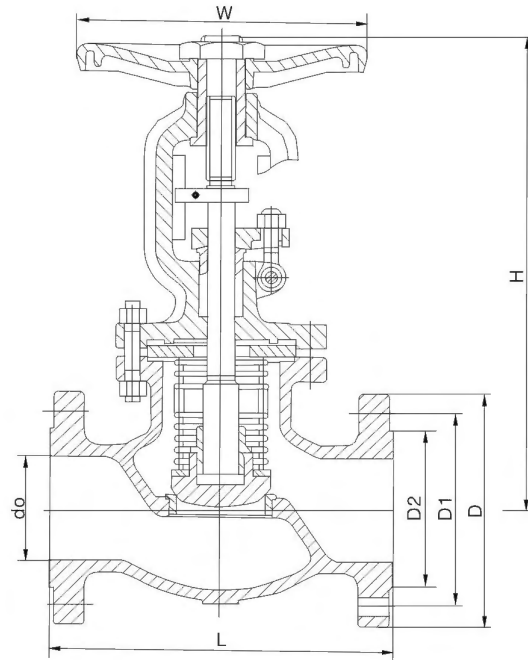
| Class 900       |    |        |        |        |         |        |        |
|-----------------|----|--------|--------|--------|---------|--------|--------|
| NPS             | in | 2      | 2-1/2  | 3      | 4       | 6      | 8      |
| DN              | mm | 50     | 65     | 80     | 100     | 150    | 200    |
| L-L1<br>(RF-BW) | in | 14-1/2 | 16-1/2 | 15     | 18      | 24     | 29     |
|                 | mm | 368    | 419    | 381    | 457     | 610    | 737    |
| L2<br>(RTJ)     | in | 14-5/8 | 16-5/8 | 15-1/8 | 18-1/8  | 24-1/8 | 29-1/8 |
|                 | mm | 371    | 422    | 384    | 460     | 613    | 740    |
| H<br>(OPEN)     | in | 9-7/16 | 10-1/4 | 10-1/4 | 12-5/8  | 15     | 20-7/8 |
|                 | mm | 240    | 260    | 260    | 320     | 382    | 530    |
| W               | in | 13-3/4 | 15-3/4 | 17-3/4 | 22-1/16 | 18-1/8 | 24     |
|                 | mm | 350    | 400    | 450    | 560     | 460*   | 610*   |
| WT<br>(kg)      | RF | 100    | 118    | 131    | 218     | 452    | 710    |
|                 | BW | 75     | 94     | 105    | 185     | 340    | 630    |

| Class 1500      |    |         |        |        |          |        |         |
|-----------------|----|---------|--------|--------|----------|--------|---------|
| NPS             | in | 2       | 2-1/2  | 3      | 4        | 6      | 8       |
| DN              | mm | 50      | 65     | 80     | 100      | 150    | 200     |
| L-L1<br>(RF-BW) | in | 14-1/2  | 16-1/2 | 18-1/2 | 21-1/2   | 27-3/4 | 32-3/4  |
|                 | mm | 368     | 419    | 470    | 546      | 705    | 832     |
| L2<br>(RTJ)     | in | 14-5/8  | 16-5/8 | 18-5/8 | 21-5/8   | 28     | 33-1/8  |
|                 | mm | 371     | 422    | 473    | 549      | 711    | 841     |
| H<br>(OPEN)     | in | 23-5/16 | 26     | 27-1/4 | 35-11/16 | 40     | 45-1/16 |
|                 | mm | 592     | 660    | 692    | 907      | 1015   | 1145    |
| W               | in | 13-3/4  | 15-3/4 | 17-3/4 | 18-1/8   | 24     | 24      |
|                 | mm | 350     | 400    | 450    | 460*     | 610*   | 610*    |
| WT<br>(KG)      | RF | 112     | 141    | 228    | 336      | 650    | 762     |
|                 | BW | 84      | 115    | 183    | 277      | 515    | 630     |

\*Manual gear operator is recommended

## ANSI More Arrangement Bellows Globe Valve

Gate Valve, Globe Valve, Plug Valve, Check Valve, Butterfly Valve, Power Station Valve, Oilfield Dedicated Valve Y-Strainer.



### Main External and Connecting Dimensions

| Nominal Pressure (Mpa) | NPS Nominal Diameter (In) | Dimension (mm) |     |       |     |     |     |     |
|------------------------|---------------------------|----------------|-----|-------|-----|-----|-----|-----|
|                        |                           | do             | D   | D1    | D2  | L   | H   | W   |
| 150LB                  | 2                         | 51             | 152 | 120.5 | 92  | 203 | 360 | 180 |
|                        | 2 1/2                     | 64             | 178 | 139.5 | 105 | 216 | 390 | 180 |
|                        | 3                         | 76             | 190 | 152.5 | 127 | 241 | 410 | 280 |
|                        | 4                         | 102            | 229 | 190.5 | 157 | 292 | 460 | 300 |
|                        | 5                         | 127            | 254 | 216   | 186 | 356 | 480 | 320 |
|                        | 6                         | 152            | 279 | 241.5 | 216 | 406 | 500 | 320 |
|                        | 8                         | 203            | 343 | 198.5 | 270 | 495 | 560 | 400 |
|                        | 10                        | 254            | 406 | 362   | 324 | 622 | 620 | 500 |
|                        | 12                        | 305            | 483 | 432   | 381 | 698 | 690 | 600 |
|                        | 14                        | 337            | 533 | 476   | 413 | 787 | 770 | 650 |
| 300LB                  | 2                         | 51             | 165 | 127   | 92  | 267 | 370 | 180 |
|                        | 2 1/2                     | 84             | 190 | 149   | 105 | 292 | 400 | 280 |
|                        | 3                         | 76             | 210 | 168.5 | 127 | 318 | 420 | 280 |
|                        | 4                         | 102            | 254 | 200   | 157 | 356 | 470 | 280 |
|                        | 5                         | 127            | 279 | 235   | 186 | 400 | 490 | 320 |
|                        | 6                         | 152            | 318 | 270   | 216 | 444 | 510 | 320 |
|                        | 8                         | 203            | 381 | 330   | 270 | 559 | 570 | 400 |
|                        | 10                        | 254            | 445 | 387.5 | 324 | 622 | 630 | 500 |
|                        | 12                        | 305            | 521 | 451   | 381 | 711 | 700 | 600 |
|                        | 14                        | 337            | 584 | 514.5 | 413 | 838 | 780 | 650 |